



**FRATELLI
GELMINI**

1907

ARCHITETTURA E STRUTTURE
IN ACCIAIO



CATALOGO REFERENZE



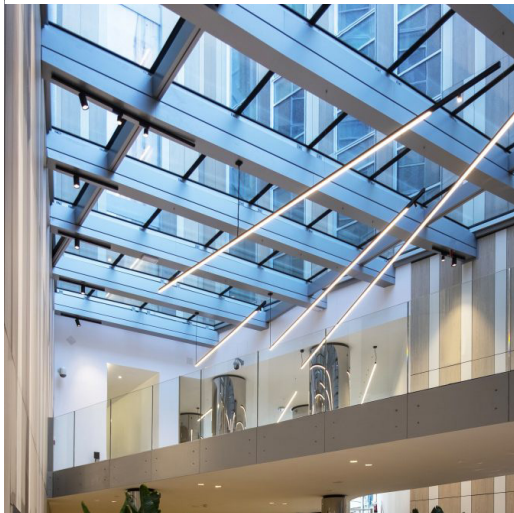
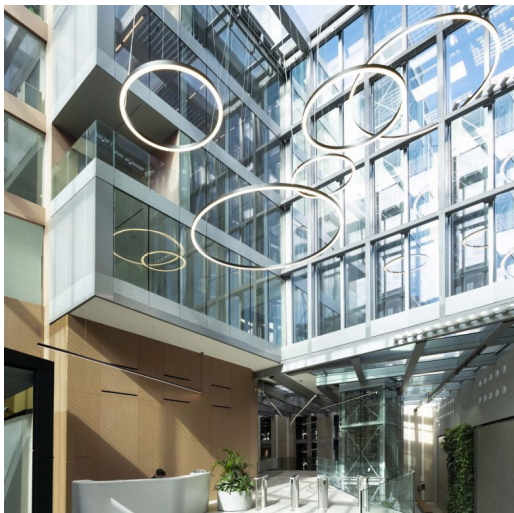
TETRA PAK CAMPUS

MODENA

committente
TETRA PAK PACKAGING SOLUTIONS

dimensioni
300 TON

anno
2020

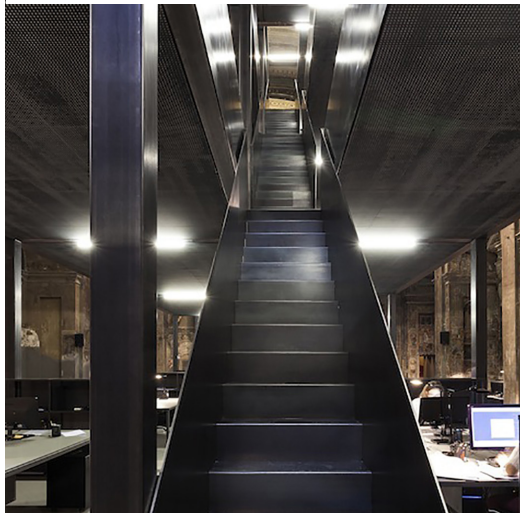


PALAZZO DI FUOCO

MILANO

committente
KRYALOS
dimensioni
350 TON

anno
2020



STRUTTURA UFFICI

MILANO

committente

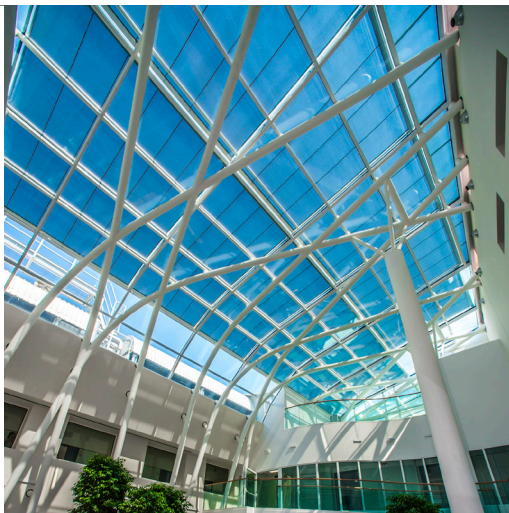
CLS ARCHITETTI

dimensioni

50 TON

anno

2014



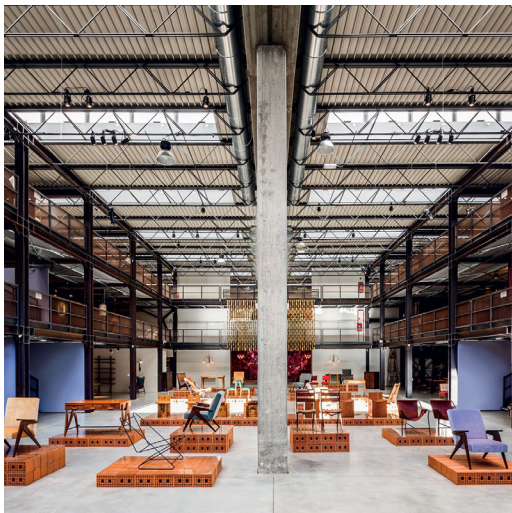
HUMANITAS CASTELLI

BERGAMO

committente
CLINICA CASTELLI

dimensioni
250 TON

anno
2015



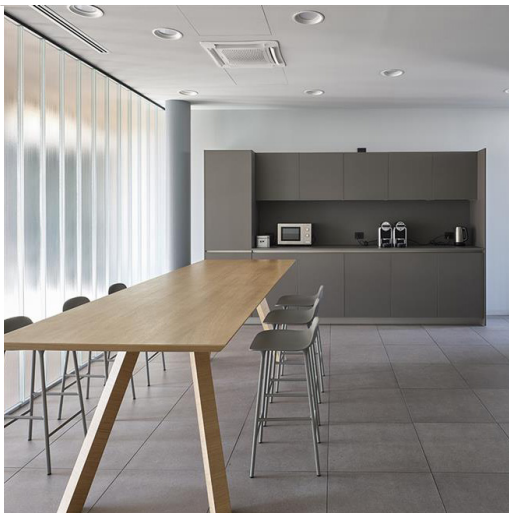
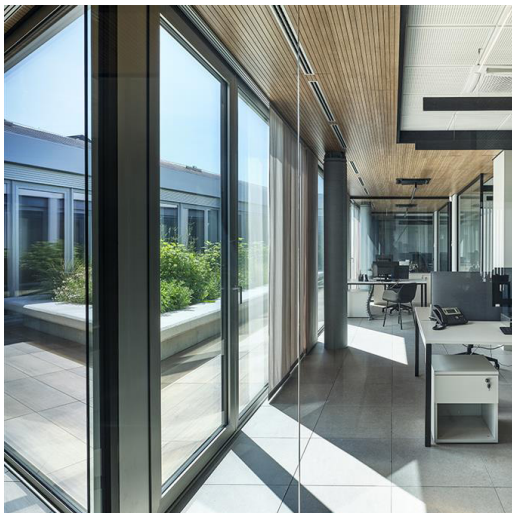
NILUFAR DEPOT

MILANO

committente
GALLERIA NILUFAR

dimensioni
200 TON

anno
2015



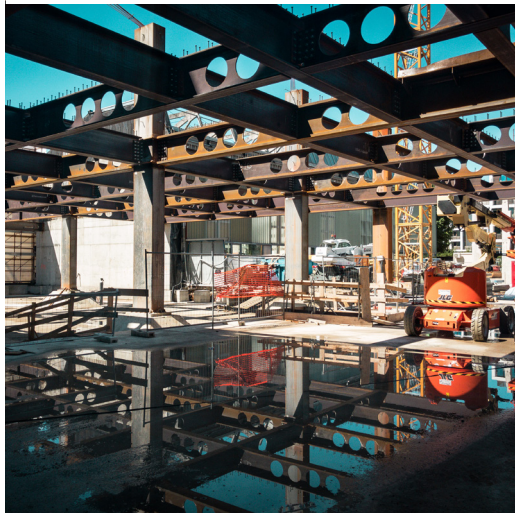
MINIFABER

BERGAMO

committente
MINIFABER SPA

dimensioni
150 TON

anno
2017



LUXOTTICA DIGITALFACTORY

MILANO

committente
LUXOTTICA GROUP SPA

dimensioni
500 TON

anno
2021



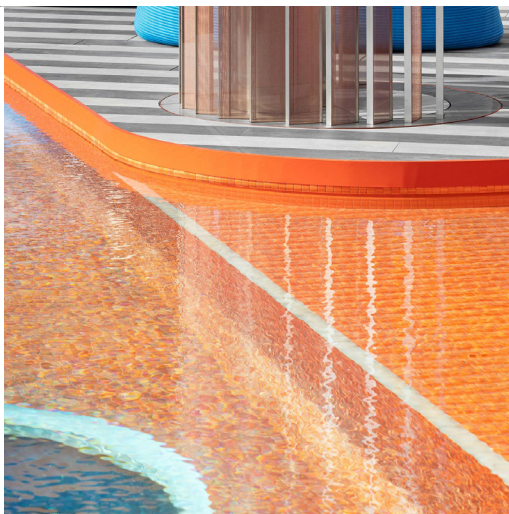
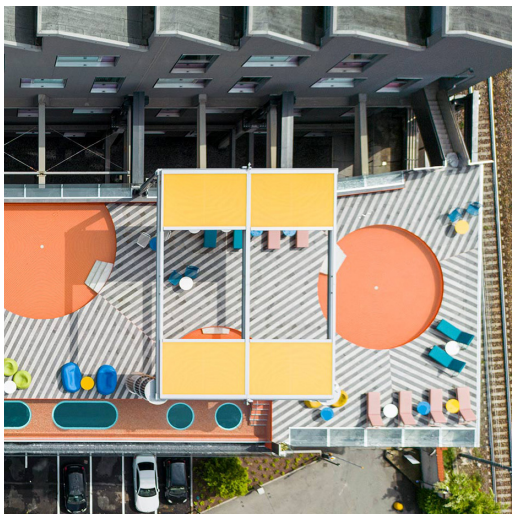
CENTRO DIREZIONALE

BERGAMO

committente
TRAFILERIE MAZZOLENI SPA

dimensioni
60 TON

anno
2022



VERTIGO MILANO

committente
NH HOTEL GROUP

dimensioni
350 TON

anno
2022