

**Steel
Pipes**
for mechanical
and structural
applications



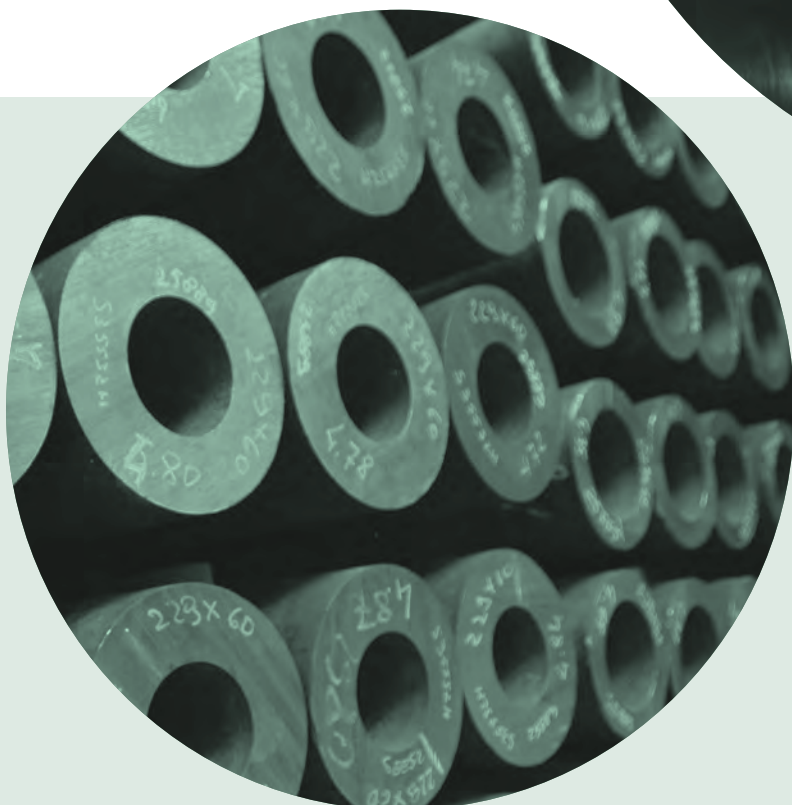
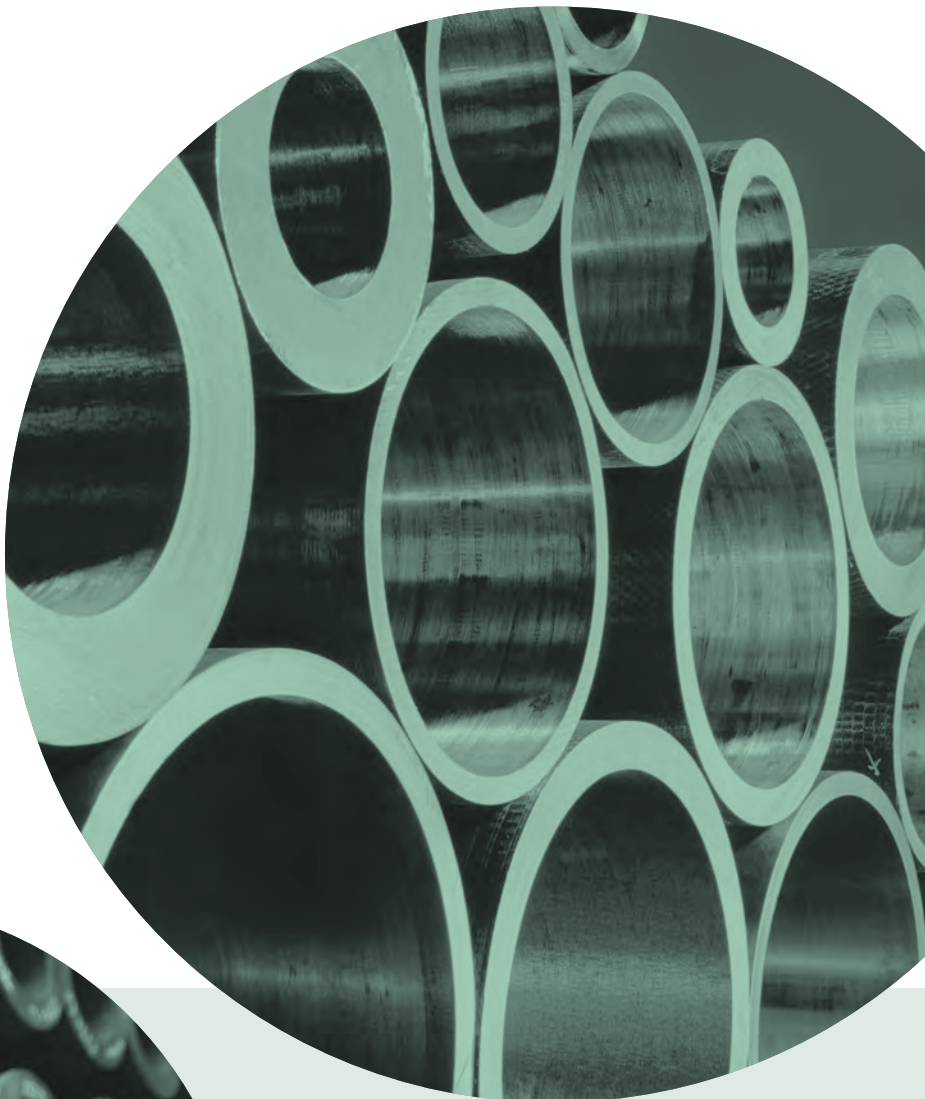
Hot rolled seamless steel pipes

Triple marked and normalized hot rolled seamless pipes (E355/S355J2H/P355N) available from stock. steel grade E470 as well as high yield strenght or Q+T pipes on demand (E590K2 / P690Q / 42CrMo4 etc)

- Size range: from diam. 33,7 mm to diam. 711 mm
- Quality: E355 / E470 / S355JOH / S355J2H / P355N
- Standard: EN 10297-1 / EN 10210 1-2 / EN 10216-3

MAIN SUPPLIERS

- Alchemia S. A. Oddzial Rurexpol (Poland)
- Alchemia S.A. Oddzial Walcownia Rur Andrzej (Poland)
- Alchemia S.A. Oddzial Walcownia Rur Batory (Poland)
- Arcelor Mittal Steel Roman (Romania)
- Arcelor Mittal Tubular Products Ostrava (Czech Rep.)
- Benteler Steel Tube Gmbh (Germany)
- BMZ Byelorussian Steel Works (Belarus)
- ESW Röhermwerke Gmbh (Germany)
- Hengyang Valin Steel Tube (China)
- Huta Batory (Poland)
- Productos Tubulares (Spain)
- Rurexpol Sp. z o. o. (Poland)
- S. C. T. M.K. - Artrom (Romania)
- Vallourec SA
- Valcovna Trub TZ (Czech Rep.)
- Valcovny trub Chomutov (Czech Rep.)
- Walcownia Rur Andrzej Sp. Z.o. o. (Poland)
- Železiarne Podbrezova (Slovak Rep.)



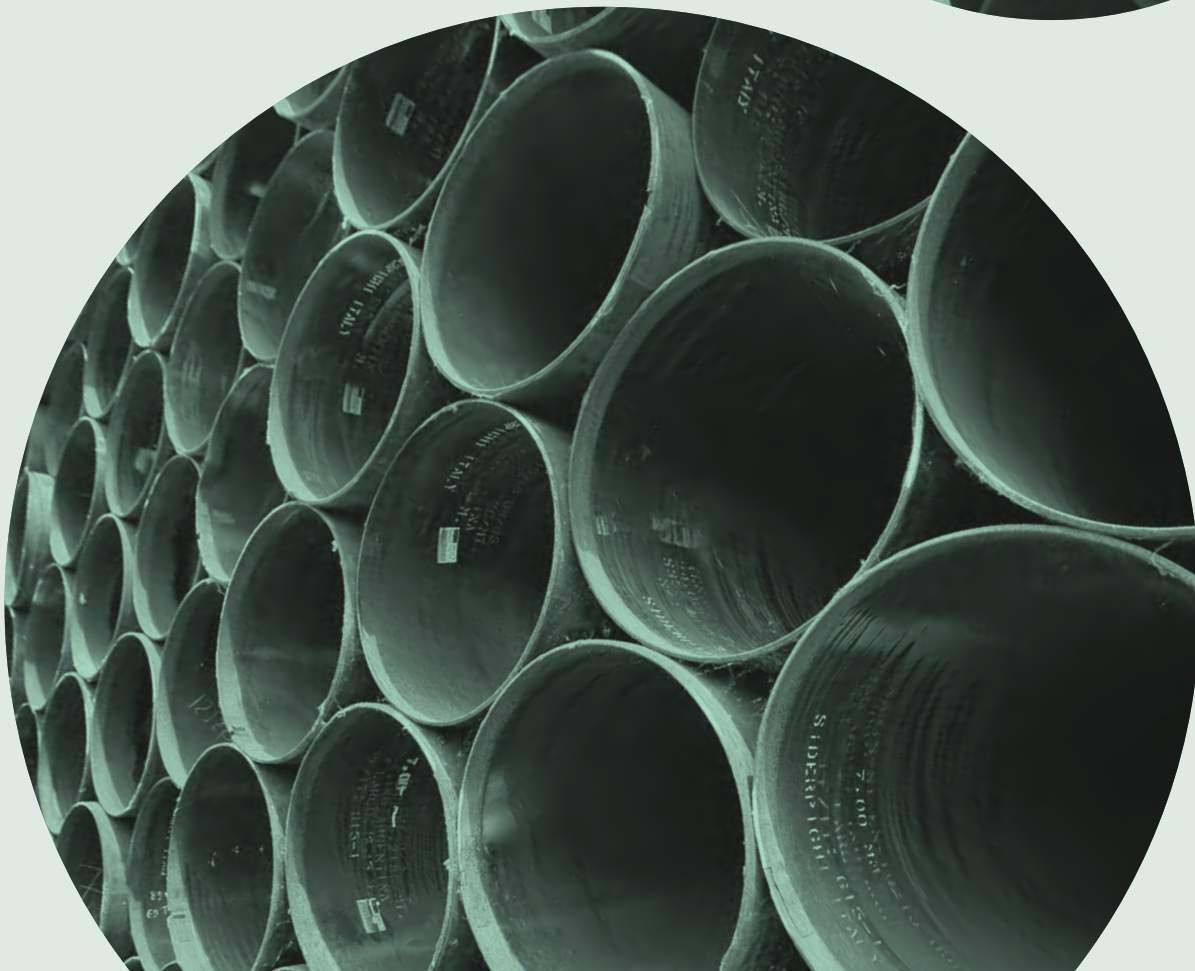
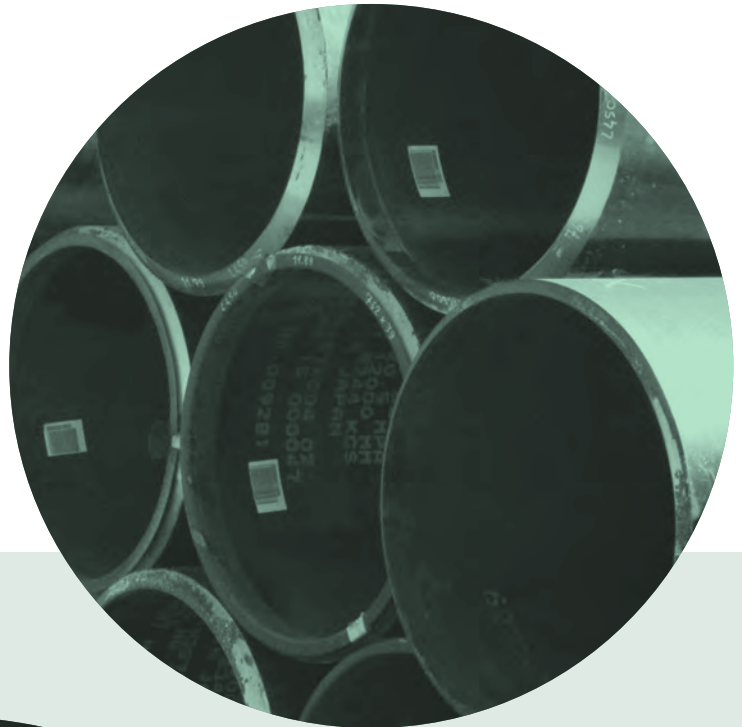
Longitudinal welded API pipes

SIDERPIGHI can provide from stock a wide range of high yield strength SAW longitudinal welded pipes for pipelines, offshore and petrochemical applications. The Partnership with one of the most important world producer, "NIPPON STEEL & SUMITOMO METAL CORPORATION", allows to satisfy all the most complicated requests.

- Size range: from diam. 457 mm to diam. 1219 mm
- Quality: L360/X52 / L415/X60 / L450/X65 / L485/X70 / L555/X80

MAIN SUPPLIERS

- Arcelor Mittal Galati (Romania)
- Bergrohr GmbH (Germany)
- EEW Erndtebrücker Eisenwerk GmbH & Co (Germany)
- Ilva (Italy)
- NSSMC Nippon Steel & Sumitomo Metal Corporation (Japan)
- Salzgitter Mannesmann (Germany)
- Tenaris Confab (Brazil)



Longitudinal welded pipes for structural applications

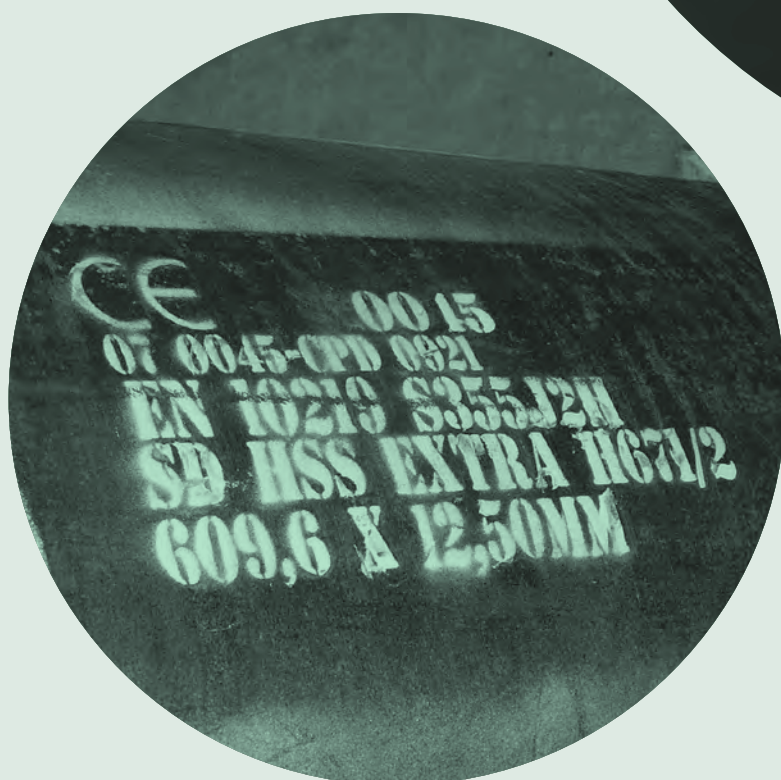
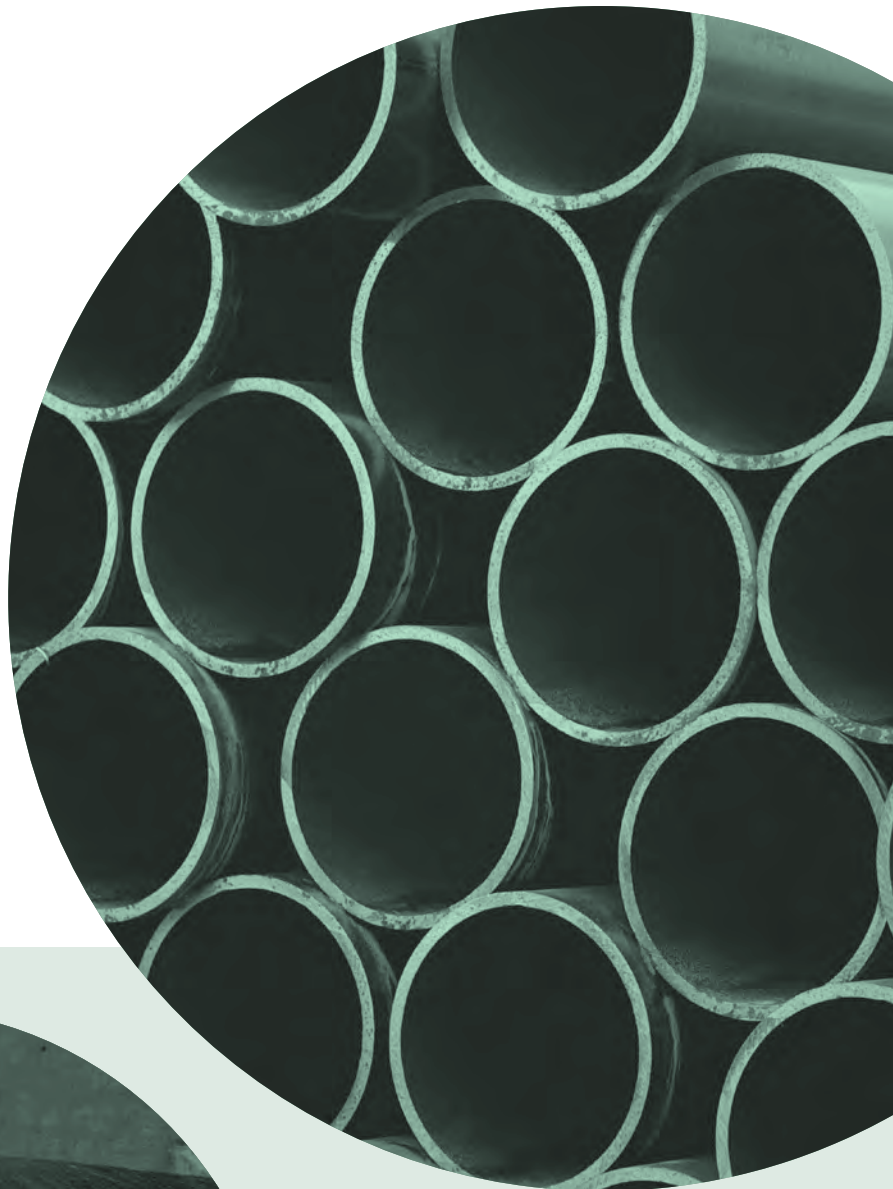
ERW and SAW longitudinal welded pipes, from European production, for structural applications (heavy industrial, civil and offshore steel structures).

- Size range ERW: from diam. 219,1 mm to diam. 610 mm.
- Size range SAW: from diam. 610 mm to diam. 1219 mm.
- Quality: S275J0H / S355J0H / S355J2H
- Standards: EN 10219 1-2

Not mentioned steel grades available on demand

MAIN SUPPLIERS

- Alessio Tubi S. p.A. (Italy)
- Arcelor Mittal Galati (Romania)
- Arvedi Tubi S. p.A. (Italy)
- Bergrohr GmbH (Germany)
- Corinth Pipeworks (Greece)
- EEW Erndtebrücker Eisenwerk GmbH & Co (Germany)
- Ilva S. p.A. (Italy)
- Marcegaglia S. p.A.
- Riveco GeneralSider S. p.A. (Italy)
- Salzgitter Mannesmann (Germany)
- Tata Steel (U. K.)
- Tecnotubi S. p.A



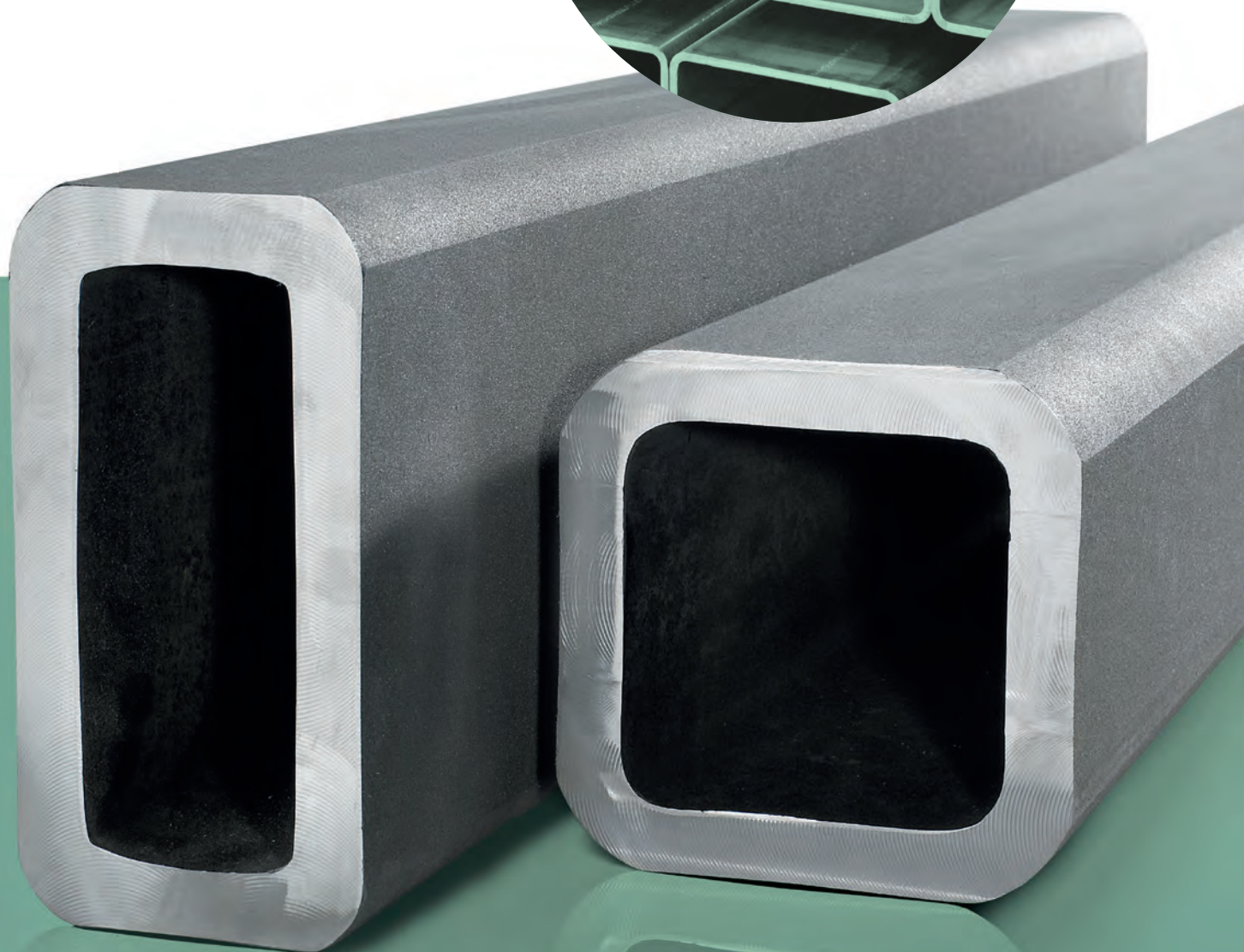
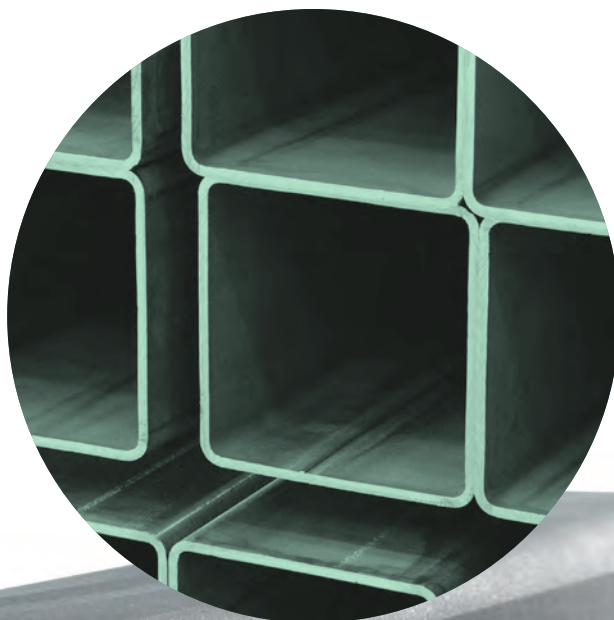
Square and rectangular hollow sections for structural applications

To complete the product range: Square and rectangular seamless and welded (hot and cold formed) hollow sections for several structural applications (steel structures, crane production, drilling towers, etc.)

- Quality: S355J2H
- Reference standards: EN 10210 1-2 / EN 10219 1-2

MAIN SUPPLIERS

- Alessio Tubi S. p.A. (Italy)
- Arvedi Tubi S. p.A. (Italy)
- Corinth Pipeworks (Greece)
- Marcegaglia S. p.A.
- Tata Steel (U. K.)
- Vallourec SA



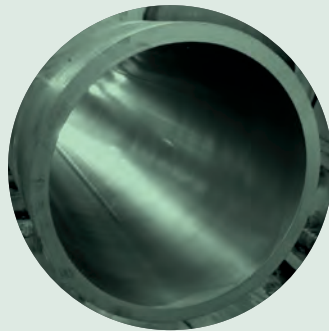
OUR SERVICES

SIDERPIGHI, as well as offering a complete size range with heavy stock availability, is focusing on different and customized solutions and services. The new E.R.P. system tracks all the stocked products and gives all the needed Real Time Info (quality, lengths, suppliers, etc.)



Cut to fix lengths

The new generation automatic CNC control bandsawing machines allow to produce short and long series up to 711mm O.D.



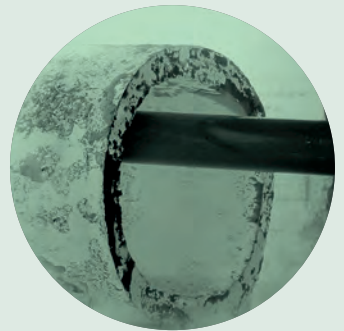
Boring honing

This service is available in the mechanical pipes size range up to the 600 mm I.D. suitable for hydraulic Cylinders.



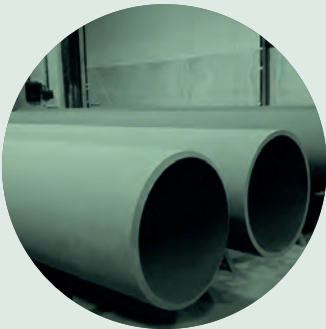
Straightening

The Straightening service for special mechanical applications can be executed with more restricted tolerances compared to the standards.



Heat treatments

For special applications, all the stock pipes can be heat treated afterwards, according to the customer's needs.



Surface treatments

The pipes can be sandblasted and delivered without rolling impurities, in order to reduce the subsequent working stages.



Technical skills

The high technical skilled people (continuously updated with periodical stages by the most prestigious mills) guarantee high and complete technical advices.



International partnerships

The strong and longlasting relationship with the main European and World producers puts SIDERPIGHI on the top of excellence in the modern market that increasingly demands more and more certified products.



Fast deliveries

Thanks to its own trucks and to the partnerships with the main transport companies, SIDERPIGHI guaranteed fast deliveries all around the Europe. The high quality packaging completes the supply.



SIDERPIGHI S.P.A. con socio unico



SALES DEPARTMENT / HEAD OFFICE

Via Emilia Parmense, 15
29010 Pontenure (PC) - Italy

Phone: +39 0523.517512
Telefax: +39 0523.517517

NORTH-EASTERN ITALY SALES OFFICE

Via G. Marconi, 120/A
35027 Noventa Padovana (PD) - Italy

Phone: +39 049.7969655
Telefax: +39 049.8252179

E-mail: siderpighi@siderpighi.it
Web site: www.siderpighi.it



www.siderpighi.it

